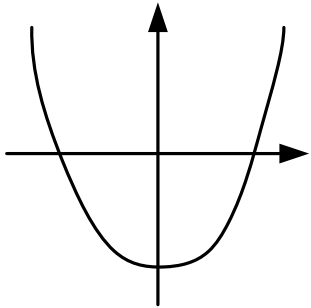


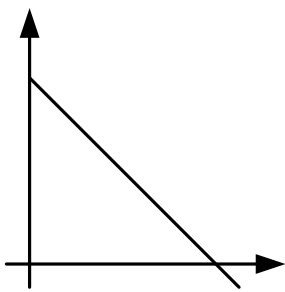
# Direct Proportion

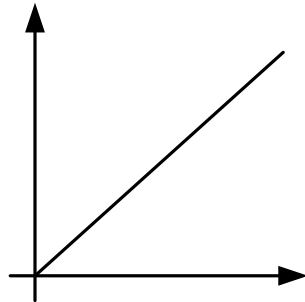


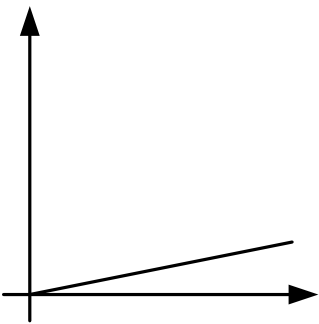
Name \_\_\_\_\_ Class \_\_\_\_\_

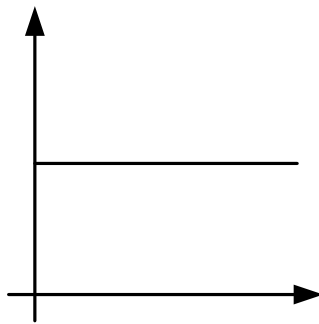
1. Tick the graph(s) that show direct proportion

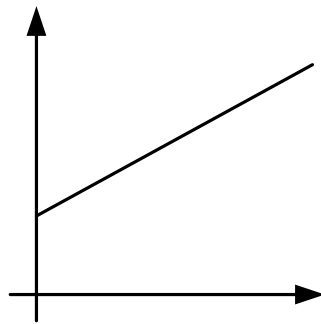














4 marks

2. What does direct proportion mean?

---



---



1 mark

2. Tick True or False:

**The graph line must go through the origin.**

TRUE

FALSE

1 mark

3.  $y$  is directly proportional to  $x$ .  
When  $x=8$ ,  $y=32$ .  
Find  $y$  when  $x=50$ .

6 marks

4.  $x$  is directly proportional to  $y^2$ .

When  $x = 8$ ,  $y=4$ . What is  $x$  when  $y = 12$  ?



6 marks



5. Speed is directly proportional to distance.

When the speed is 45, the distance is 80.

What is the speed when the distance is 200?



5 marks